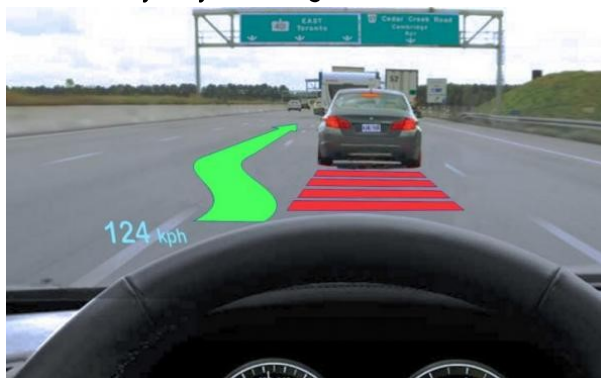

Xilinx to enable Baidu Brain edge AI applications

January 18, 2019 // By Ally Winning



Baidu's EdgeBoard edge acceleration computing solution will be powered by Xilinx Zynq UltraScale+ MPSoC technologies.

The EdgeBoard can also be configured and customized as part of the Baidu Brain AI Hardware Platform initiative, which was developed to deliver market-specific technologies to the industry for edge-specific applications.

The Baidu Brain AI Hardware Platform is part of the Baidu Brain AI capabilities open platform, which includes Baidu's open computing services and hardware and software products for edge AI applications. EdgeBoard is powered by the Xilinx Zynq UltraScale+ MPSoC, which integrates powerful real-time processors with programmable logic, providing developers with high levels of system performance, flexibility and scalability.

EdgeBoard will enable the development of edge application products such as smart-video security surveillance solutions, advanced-driver-assistance systems and next-generation robots.

<http://ai.baidu.com/tech/hardware/deepkit>

Related news

Xilinx introduces 16nm Defense-Grade UltraScale+ Portfolio

Xilinx Zynq Ultrascale+ products assessed to SIL 3

Xilinx Zynq UltraScale+ SoC module with two memory channels

Xilinx Zynq UltraScale+ MPSoC module

This site uses cookies to enhance your visitor experience. By continuing your visit to this site, you accept the use of cookies to offer services and offers tailored to your interests ([see our Privacy & Data Protection Policy](#)).

I UNDERSTAND

[Edit](#)